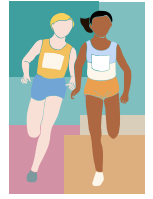




# Flushing Christian School

## Field Day Memo



### JOG-A-THON · FIELD DAY 2017 · FRIDAY, JUNE 2

Flushing Christian School's annual **Field Day/Jog-A-Thon** is coming up soon, on **Friday, June 2nd!** Field Day is an all-school fund-raising event and a wonderful fun time for your students to put on their sneakers and get involved in fun and fitness together at Kissena Park.

At Field Day, each student will compete in several fun-filled events of their choice to raise support for FCS. What will this fun cause support? We're glad you asked. All monies donated will help support important needs of FCS, including:

- ◆ Financial Assistance
- ◆ Technology
- ◆ The purchase of Christian Textbooks
- ◆ Classroom Supplies for your children.

*To make it a success, we need your participation. Here is what you can do:*

1. Ask at least ten individuals to sponsor your child for Field Day, e.g. a relative, friend, co-worker, neighbor, or church member.
2. Enter their name, contact info, and amount donated on the attached **Sponsor List**.
3. Return that completed Sponsor List (with any donations you have received) to FCS as soon as possible, but no later than **May 25th**. Sponsors may also donate through Paypal or by sending a check or money order directly to the school.
4. Each sponsor will receive a tax deductible gift receipt.

**Our GOAL:**  
If every student provides 10 sponsors, who each give \$25, FCS will raise over \$30,000 toward supporting: **Financial Assistance, Technology, Christian Textbooks, & Classroom Supplies.**

### TO SHOW OUR APPRECIATION, HERE'S WHAT WE WILL DO FOR YOU!!!

...For every \$100 raised in donations = students will receive a N.U.T. ("No Uniform Today") Card.

...For every class with 100% participation = classes will receive an ICE CREAM PARTY.

...For every \$25 donation received = students will receive a ticket for the Grand Prize Drawing.  
(Ex: Students who raise \$100 will have four chances to win.)

**The Grand Prize will be Dinner and Movie for a family of four at**

**Applebee's and AMC Loews Bay Terrace 6**

**At the Bay Terrace, Bayside, Queens**